

WANGANELLA 180380

2018 Drop Wanganella Stud Sire
 Sire: Wanganella 130844 x EM137
 Dam: Wanganella Special Ewe

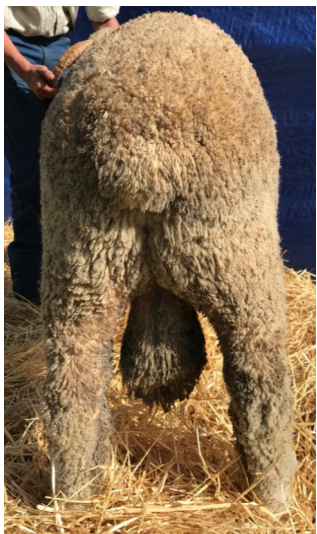
Stud Master's Comment: A deep barreled sire who stands squarely on all feet; he has a great sire's head with wide set horns and a pure muzzle. A gutsy, rich, strong wool with lustre and nourishment. He has a wool type that is very hard to find, coupled with his exceptional wool cut.



| 2019 Test | |
|-----------|------|
| FD | 21.5 |
| SD | 3.1 |
| CV | 14.4 |
| CF | 98.2 |

| 19 Aug 2019 | |
|-------------|-------|
| Wt (kg) | 108.0 |
| EMD (mm) | 40.0 |
| Fat (mm) | 5.0 |

| ASBV Analysis - 7 Aug 2019 | | |
|----------------------------|--------|-------|
| ASBV | Result | Acc % |
| YFD | -0.5 | 74% |
| YCFW | 33.7 | 60% |
| PWT | 5.9 | 70% |
| YWT | 8.4 | 69% |
| YEMD | -0.1 | 48% |
| YFAT | 0.0 | 46% |
| MP+ | 170 | 38% |
| DP+ | 169 | 37% |
| Top 1% Top 5% Top 10% | | |



AUSTRALIAN FOOD
& AGRICULTURE

SG ID: 5000832018180380
 Semen \$50 + GST per dose
 minimum 40 dose order
 Shannon Mitchell 0488 601 603
 Angus Munro 0437 929 195
 Justin Campbell 0427 262 956
 On-line ordering austfood.com.au
 International pricing on request